

Route 303

Updated: December 2011

1972 Description: Goblin Valley State Park

*(A) Commission Action April 14, 1972.

From Goblin Valley Overlook northerly to the north boundary of Goblin Valley State Park, a distance of 1.0 ± miles.

1983 Legislature: Description remains the same.

1985 Legislature: Description remains the same.

1986 Legislature: Description remains the same.

1987 Legislature: Description remains the same.

1988 Legislature: Description remains the same.

1990 Legislature: Description remains the same.

1992 Legislature: Description remains the same.

1993 Legislature: Description remains the same.

1994 Legislative Description:

From the Goblin Valley Overlook northerly to the Goblin Valley State Park north boundary.

1995 Legislature: Description remains the same.

1996 Legislature: Description remains the same.

1997 Legislature: Description remains the same.

1998 Legislature: Description remains the same.

1999 Legislature: Description remains the same.

2000 Legislature: Description remains the same.

2001 Legislature: Description remains the same.

2002 Legislature: Description remains the same.

2003 Legislature: Description remains the same.

2004 Legislature: Description remains the same.

2005 Legislature: Description remains the same.

2006 Legislature: Description remains the same.

2007 Legislature: Description remains the same.

2008 Legislature: Description remains the same

2011 Legislature: Description remains the same.

* Refers to Resolution index page following.

Route 303

COUNTY/VOLUME & RESOLUTION NUMBER

A. Emery Co. 4/35

DESCRIPTION OF RESOLUTION CHANGE

(A). Addition - Added Goblin Valley State Park Road to State System of Highways.

SR-303

~~Emergency~~
35

File

R E S O L U T I O N

State Route 303

aj
RL7

WHEREAS, Section 63-11-20, Utah Code Annotated, 1953, as amended, relates that: "All roads connecting state parks with federal, state or county highways or city streets where the title thereto is in the state are parts of the state highway system and are to be maintained by the state. The state road commission is authorized to construct and maintain roads within state parks subject to approval of locations and design by the commission through its director", and

WHEREAS, it is the desire of the Utah State Road Commission and the Utah State Division of Parks and Recreation to define responsibility for the administration of roads at state parks, and

WHEREAS, it is agreed between the State Road Commission and the State Division of Parks and Recreation that certain roads meet the criteria set forth in Section 63-11-20, UCA, 1953, as amended, and

WHEREAS, those roads at state parks that are part of the State System of Highways should be identified by a number.

NOW THEREFORE, in accordance with Section 63-11-20, UCA, 1953, as amended, it is hereby resolved as follows:

That the roadway from the Goblin Valley Overlook northerly a distance of 1.0 + - miles to the Goblin Valley State Park north boundary be identified as State Route 303,

That the map attached illustrating the action taken herewith be hereby incorporated as a part of this submission.

Dated this 14th day of April, 1972.

Glen A. Church
Chairman

R. LaDawn Cox
Vice-Chairman

Francis F. Futral
Commissioner

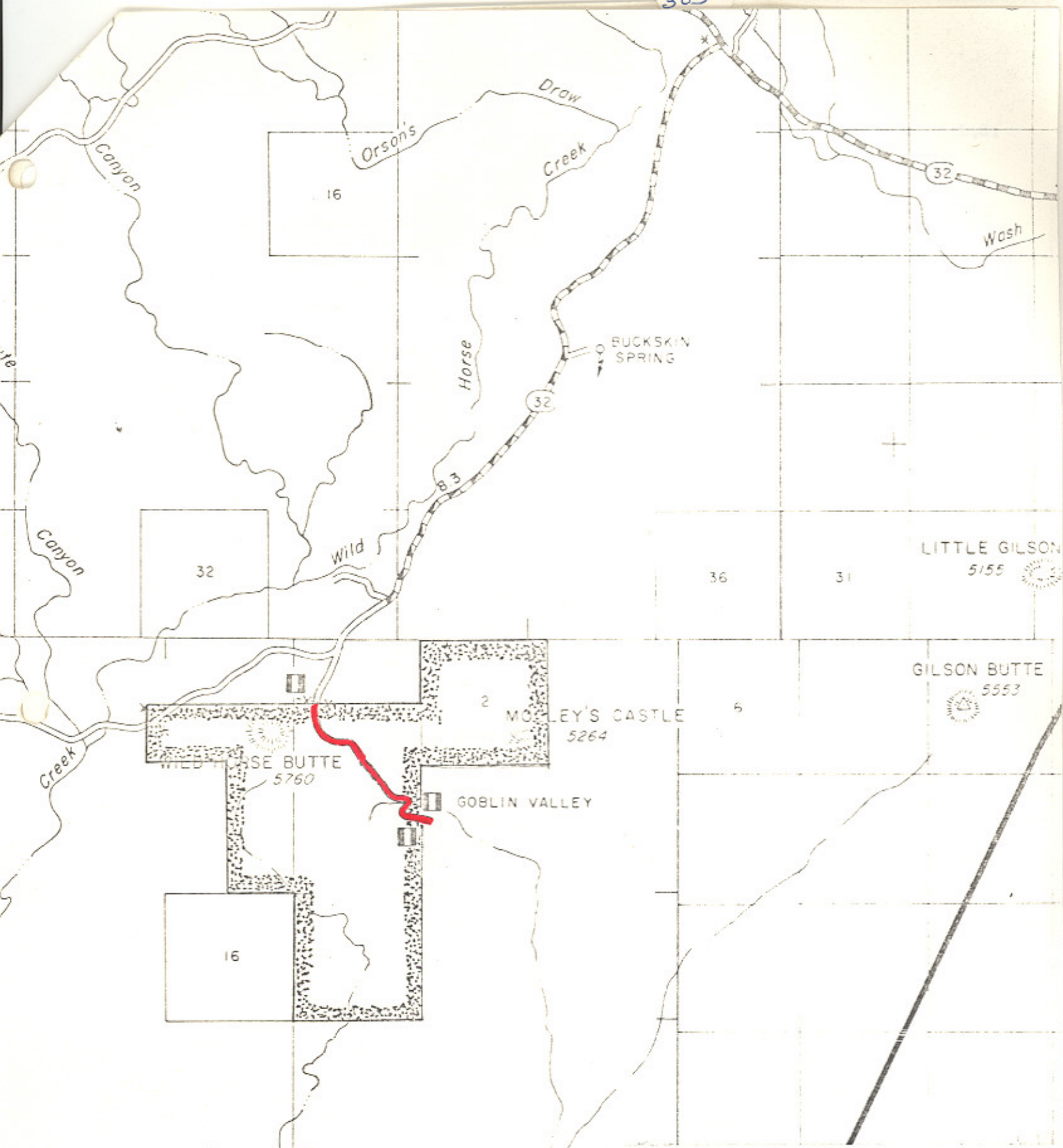
Clarence M. Hill
Commissioner

Joe H. Park
Commissioner

ATTEST:

Ronald A. Zerkley
Secretary

SK-303



Rough
△ 5257

UTAH STATE DEPARTMENT OF HIGHWAYS
Systems Planning Division

STATE ROUTE IDENTIFICATION
EMERY COUNTY

— Location State Route 303

32

36

SR-303

UTAH STATE DEPARTMENT OF HIGHWAYS

cc: Howard B. Leatham, Engineer for Planning & Programming

Same letter sent to: Mr. Norman V. Hancock, Chief, Game Management Section, S.L.C.

Information sent to: District #1 Bert Taylor, #2 J. Q. Adair, #4 James L. Deaton
District #5 C. V. Anderson, #6 Edwin Lovelace

Jerry Fenn	Maurice Richey	Ellen Wandell	Charles Bertolina
Ralph Murdock	Clarence Stephens	Harold Brown	Jim West
Dean Steed	Evelyn Crill	Ray Behling	Don Jensen
Porter M. Gooch	Wallace Liddle	Bonnie Garcia	Clarence Bywater
Keith Rosevear	David Sargent	John W. Homer	Ken Riddle
Robert Walsh	Art Geurts	Chauncey Powis	Winston Neiman
Lillian Witkowski	Robin Hood	E. Paul Gilgen	Robert Weadon
Mary Decker	Ezra Christensen	Bert Kros	Steve Lawson
			Howard Richardson

April 25, 1972

Mr. Harold J. Tippetts, Director
Parks and Recreation Division
1596 West North Temple Street
Salt Lake City, Utah 84104

Dear Mr. Tippetts:

Subject: Designation of State Routes 300, 301, 302, 303 and 304 in Utah
State Parks

Effective April 14, 1972, the State Road Commission of Utah adopted resolutions to designate those roadways described in the attached resolutions as a part of the State System of Highways.

Attached are copies of the resolutions and location maps.

Very truly yours,

L. R. Jester, P.E.
Chief, Systems Planning Div.

Attachment

Letters pertaining to routes within their county were sent to:

J. William Hyde, Cache County	Gardell Snow, Emery County
Carlos E. Porter, Summit County	Bert L. Angus, Uintah County
Truman Bowler, Washington County	

BDB:WDM:RDent:bt